

Sophisticated Elevator Environments

# SONGSAN Special Elevators Design Collection



주식회사 송산특수엘리베이터  
SONGSAN SPECIAL ELEVATORS CO., LTD.



 **GREEN TECHNOLOGY**



# SONGSAN CREATIVE DESIGN COLLECTION

송산만의 독창적인 디자인 컬렉션

SONGSAN has made exclusive advance and unique harmony between elevators and passengers. SONGSAN design book based on creativity gives fantastic experience to passengers in beauty, function and sentiment.

It is the SONGSAN's goal to create the best passenger experience. Both comfortable riding and perfect operating make smooth passenger flow. At the same time, the car interior design gives wonderful experience to passengers.

SONGSAN's design is in the first class in quality of materials, process of manufacture & assembly and shows patented arch design, innovative car operating panel, material development and updated technology are applied to any type of architecture.

SONGSAN's will lead next generation design and technology such as ubiquitous computing environment, new material development and green technology in the elevator field.

SONGSAN will open the new era of elevator history!



## CONTENTS

SONGSAN CREATIVE DESIGN COLLECTION .....	O3
INNOVATIVE DESIGN .....	O4
THE WORLD FIRST ONLY SONGSAN ARCH DESIGN .....	O6
CAR DESIGN .....	O8
CEILING COLLECTION .....	22
PATTERN & TEXTURES .....	24
OPERATING PANEL DESIGN .....	28
INDICATOR ACCESSORY DESIGN .....	30

# INNOVATIVE DESIGN

Passenger Friendly  
Next Generation Conception

차세대 디자인라인으로 완성되는 건축물의 품격

## DESIGN IN SMARTNESS

SONGSAN innovative design provides convenience, comfort, relax, marvelous experience with passengers.

### 1. Updated Display

- Computerized communication display
- LED display having variety of colors and patterns in car operating panel

### 2. High-tech Touch Operating System

- Hall button in artificial intelligence
- Car operating panel with security system designated passengers

### 3. Unique Arch Design

- Space efficiency
- Revolution of entrance architecture in art



“

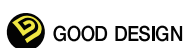
SONGSAN is surprising passengers  
with 3D-effect wall material supported new  
illumination made in freshly developed material

”





# THE WORLD FIRST ONLY SONGSAN ARCH DESIGN



GOOD DESIGN

Highly luxurious Arch Constellation Elevator with arch style design not only supplies comfortable and convenient spatial feeling by providing highly effective space layout but also elevate the elegance of architectural space through ultra modern creative design.



## SPECIAL ADVANTAGES OF ROUND ENTRANCE ELEVATOR

- High graceful design : Arch type design used at ancient palace, triumphal arch etc. was applied to elevator first time in the world, and we supply distinguishable high graceful visual space than existing elevator.
- By dispersing the vertical gravitational pressure to the sides with unique capability of arch configuration, the elevator provides safer structure than general elevators.
- Arch Entrance Elevator provide elegant and comfortable spatial feeling when getting on and off the elevator with increased effective height of 100~300mm at entrance than general elevators.

# CAR DESIGN

Elegant Arch Design Line

08

## CONSTELLATION®

### DESIGN IMAGE



Arch Entrance

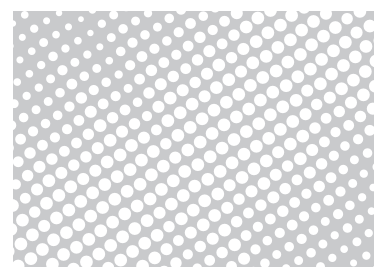


Front View

### SPECIFICATION & DESIGN

제품사양 및 디자인

• Ceiling Steel	Lacquer+Acrylic
• Car Wall, Door	Stainless Etching Finish, Painted Steel
• Operation Panel	Special Black Color Finish
• Position Indicator	2" Digital Display
• Car Sill	Extruded Aluminum
• Ventilation Type	Line Flow Fan
• Floor Finish	Decotile
• Indicator	Horizontal 2" Digital Display
• Jamb	Stainless Hairline, Black Acrylic
• Door	Stainless Etching Finish
• Button	Micro Push Type
• Transom	Stainless Hairline



디자인 및 재질은 고객의 요청에 따라 변경 가능합니다.  
Design & material are possible to be changed by customer's requirement.



SONGSAN SPECIAL ELEVATORS CO., LTD.

# RENAISSANCE®

## DESIGN IMAGE



Arch Entrance



Front View

## SPECIFICATION & DESIGN

제품사양 및 디자인

• Ceiling Steel	Lacquer+Acrylic
• Car Wall, Door	Stainless Etching Finish, High Glossy
• Operation Panel	Stainless Hairline
• Position Indicator	2" Digital Display
• Car Sill	Extruded Aluminum
• Ventilation Type	Line Flow Fan
• Floor Finish	Decotile
• Indicator	Horizontal 2" Digital Display
• Jamb	Stainless Hairline
• Door	Stainless Etching Finish
• Button	Micro Push Type
• Transom	Stainless Hairline



디자인 및 재질은 고객의 요청에 따라 변경 가능합니다.  
Design & material are possible to be changed by customer's requirement.

# CAR DESIGN

Elegant Arch Design Line

10

**AQUA**®

## DESIGN IMAGE



Arch Entrance



Front View

## SPECIFICATION & DESIGN

제품사양 및 디자인

• Ceiling Steel	Lacquer+Acrylic
• Car Wall, Door	Stainless Etching Finish
• Operation Panel	Stainless Hairline
• Position Indicator	2" Digital Display
• Car Sill	Extruded Aluminum
• Ventilation Type	Line Flow Fan
• Floor Finish	Decotile
• Indicator	Horizontal 2" Digital Display
• Jamb	Stainless Hairline
• Door	Stainless Etching Finish
• Button	Micro Push Type
• Transom	Stainless Hairline



디자인 및 재질은 고객의 요청에 따라 변경 가능합니다.  
Design & Material are possible to be changed by customer's requirement.



# ECOLE<sup>®</sup>

## DESIGN IMAGE



Arch Entrance



Front View

## SPECIFICATION & DESIGN

제품사양 및 디자인

• Ceiling Steel	Lacquer+Acrylic
• Car Wall, Door	Stainless Etching Finish, Wood
• Operation Panel	Stainless Hairline
• Position Indicator	2" Digital Display
• Car Sill	Extruded Aluminum
• Ventilation Type	Line Flow Fan
• Floor Finish	Decotile
• Indicator	Horizontal 2" Digital Display
• Jamb	Stainless Hairline
• Door	Stainless Etching Finish
• Button	Micro Push Type
• Transom	Stainless Hairline



디자인 및 재질은 고객의 요청에 따라 변경 가능합니다.  
Design & Material are possible to be changed by customer's requirement.

# CAR DESIGN

Elegant Arch Design Line

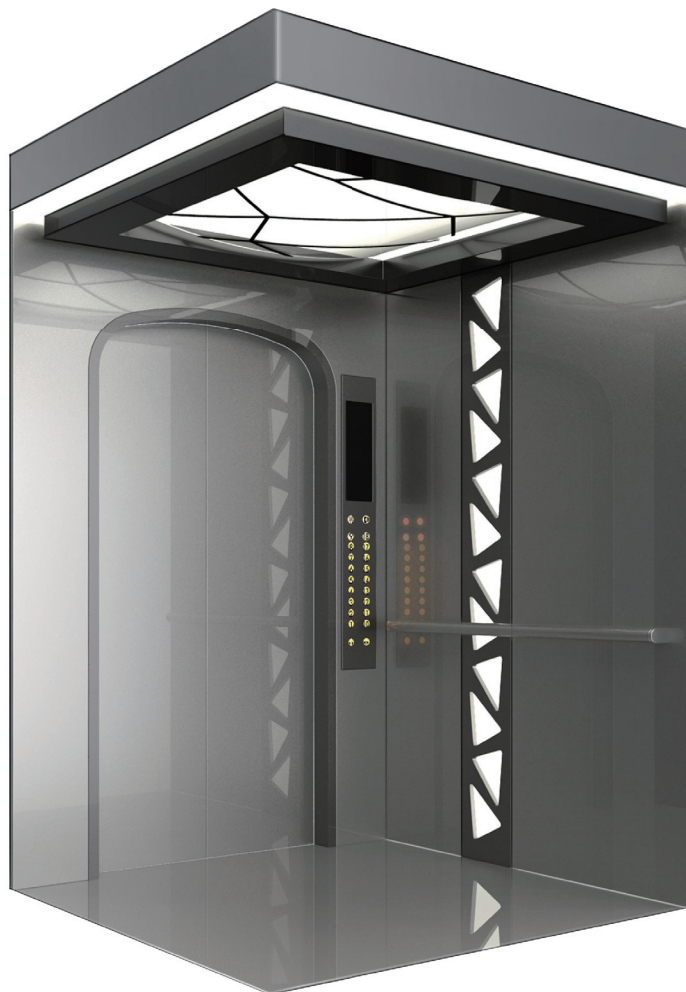
12

## ORGANIC®

### DESIGN IMAGE



Arch Entrance



Front View

### SPECIFICATION & DESIGN

제품사양 및 디자인

• Ceiling Steel	Lacquer+Acrylic
• Car Wall, Door	Stainless Hairline, Acrylic
• Operation Panel	Stainless Hairline
• Position Indicator	2" Digital Display
• Car Sill	Extruded Aluminum
• Ventilation Type	Line Flow Fan
• Floor Finish	Decotile
• Indicator	Horizontal 2" Digital Display
• Jamb	Stainless Hairline
• Door	Stainless Etching Finish
• Button	Micro Push Type
• Transom	Stainless Hairline



디자인 및 재질은 고객의 요청에 따라 변경 가능합니다.  
Design & Material are possible to be changed by customer's requirement.



# MATRIX I<sup>®</sup>

## DESIGN IMAGE



Arch Entrance



Front View

## SPECIFICATION & DESIGN

제품사양 및 디자인

• Ceiling Steel	Lacquer+Acrylic
• Car Wall, Door	Stainless Hairline, Black Mirror
• Operation Panel	Stainless Hairline
• Position Indicator	2" Digital Display
• Car Sill	Extruded Aluminum
• Ventilation Type	Line Flow Fan
• Floor Finish	Decotile
• Indicator	Horizontal 2" Digital Display
• Jamb	Stainless Hairline
• Door	Stainless Etching Finish
• Button	Micro Push Type
• Transom	Stainless Hairline



디자인 및 재질은 고객의 요청에 따라 변경 가능합니다.  
Design & Material are possible to be changed by customer's requirement.

# CAR DESIGN

Elegant Arch Design Line

14

## MATRIX II®

### DESIGN IMAGE



Arch Entrance

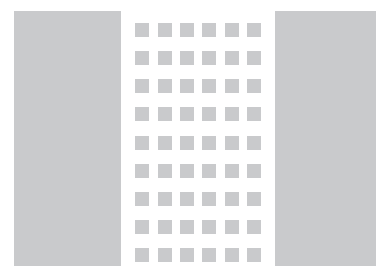


Front View

### SPECIFICATION & DESIGN

제품사양 및 디자인

• Ceiling Steel	Lacquer+Acrylic
• Car Wall, Door	Stainless Etching Finish, Black Mirror
• Operation Panel	Stainless Hairline
• Position Indicator	2" Digital Display
• Car Sill	Extruded Aluminum
• Ventilation Type	Line Flow Fan
• Floor Finish	Decotile
• Indicator	Horizontal 2" Digital Display
• Jamb	Stainless Hairline
• Door	Stainless Super Mirror, Hairline Finish
• Button	Micro Push Type
• Transom	Stainless Hairline



디자인 및 재질은 고객의 요청에 따라 변경 가능합니다.  
Design & Material are possible to be changed by customer's requirement.



# SPERA<sup>®</sup>

## DESIGN IMAGE



Arch Entrance



Front View

## SPECIFICATION & DESIGN

제품사양 및 디자인

• Ceiling Steel	Lacquer+Acrylic
• Car Wall, Door	Stainless Etching Finish, Painted Steel
• Operation Panel	Stainless Hairline
• Position Indicator	2" Digital Display
• Car Sill	Extruded Aluminum
• Ventilation Type	Line Flow Fan
• Floor Finish	Decotile
• Indicator	Horizontal 2" Digital Display
• Jamb	Stainless Etching
• Door	Stainless Etching Finish
• Button	Micro Push Type
• Transom	Stainless Hairline



디자인 및 재질은 고객의 요청에 따라 변경 가능합니다.  
Design & Material are possible to be changed by customer's requirement.

# CAR DESIGN

Luxury Line

16

## SD-501

### DESIGN IMAGE

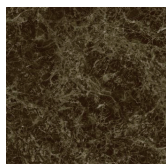


Front View

### SPECIFICATION & DESIGN

제품사양 및 디자인

- **Ceiling** Painted Steel, Wood Film, Acrylic, LED(Saving Type)
- **Car Door** Stainless Ti/Gold 3S Vibration
- **Front Wall** Stainless Ti/Gold 3S Vibration
- **Side Wall** Wood, Ti/Gold Trim, Marble Glass, Black Mirror
- **Handrail** Wood, Ti/Gold Polishing
- **Floor Finish** Marble



## SD-502

### DESIGN IMAGE



Front View

### SPECIFICATION & DESIGN

제품사양 및 디자인

- **Ceiling** Painted Steel, Wood Film, Acrylic, LED(Saving Type)
- **Car Door** Stainless Ti/Bronze 3S Vibration
- **Front Wall** Stainless Ti/Bronze 3S Vibration
- **Side Wall** Wood, Stainless Ti/Bronze 3S Vibration
- **Handrail** Wood Pipe, Ti/Bronze Bar
- **Floor Finish** Marble



디자인 및 재질은 고객의 요청에 따라 변경 가능합니다.  
Design & Material are possible to be changed by customer's requirement.

# SPARA

Panoramic Design

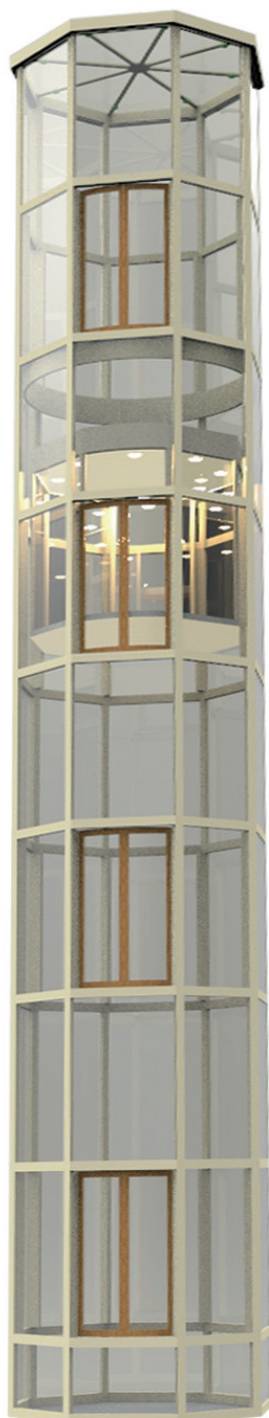


SONGSAN SPECIAL ELEVATORS CO., LTD.

17

## SD-801

DESIGN IMAGE



## SD-802

DESIGN IMAGE



## SD-803

DESIGN IMAGE



### SPECIFICATION & DESIGN

제품사양 및 디자인

- |                |                                   |
|----------------|-----------------------------------|
| • Ceiling      | Special Glass, LED Lighting       |
| • Car Door     | Special Round Glass, Safety Glass |
| • Front Wall   | Special Glass                     |
| • Side Wall    | Special Glass                     |
| • Handrail     | Ti/Bronze Bar                     |
| • Floor Finish | Natural Marble                    |

# CAR DESIGN

Deluxe Line

18

## SD-505

### DESIGN IMAGE



Front View

### SPECIFICATION & DESIGN

제품사양 및 디자인

- **Ceiling** Painted Steel, Acrylic
- **Car Door** Stainless Hairline, Black Mirror
- **Front Wall** Stainless Hairline, Black Mirror
- **Side Wall** Stainless Mirror Trim, Image Glass  
Black Mirror
- **Handrail** Stainless Polishing
- **Floor Finish** Decotile



## SD-506

### DESIGN IMAGE



Front View

### SPECIFICATION & DESIGN

제품사양 및 디자인

- **Ceiling** Steel Painted, Barrisol
- **Car Door** Stainless 3S Vibration
- **Front Wall** Stainless 3S Vibration
- **Side Wall** Stainless 3S Vibration, Stainless Mirror Trim
- **Handrail** Stainless Polishing Polishing
- **Floor Finish** Decotile



디자인 및 재질은 고객의 요청에 따라 변경 가능합니다.  
Design & Material are possible to be changed by customer's requirement.



## SD-507

### DESIGN IMAGE

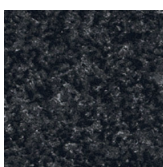


Front View

### SPECIFICATION & DESIGN

제품사양 및 디자인

- **Ceiling** Painted Steel, Stainless Mirror, Stainless Trim, Acrylic
- **Car Door** Stainless Hairline
- **Front Wall** Stainless Hairline
- **Side Wall** Image Glass, Stainless Trim, Formica
- **Handrail** Stainless Polishing
- **Floor Finish** Decotile



## SD-508

### DESIGN IMAGE



Front View

### SPECIFICATION & DESIGN

제품사양 및 디자인

- **Ceiling** Painted Steel, Stainless Mirror, Stainless Trim, Acrylic
- **Car Door** Stainless Hairline
- **Front Wall** Stainless Hairline
- **Side Wall** Image Glass, Stainless Trim
- **Handrail** Stainless Polishing
- **Floor Finish** Decotile



# CAR DESIGN

Deluxe Line

20

## SD-509

### DESIGN IMAGE



Front View

### SPECIFICATION & DESIGN

제품사양 및 디자인

- Ceiling Lacquer+Acrylic
- Car Wall, Door Stainless Hairline Etching Finish
- Operation Panel Stainless Hairline
- Position Indicator 2" Digital Display
- Car Sill Extruded Aluminum
- Handrail Stainless Polishing
- Floor Finish Decotile



## SD-510

### DESIGN IMAGE



Front View

### SPECIFICATION & DESIGN

제품사양 및 디자인

- Ceiling Lacquer+Acrylic
- Car Wall, Door Stainless Hairline Mirror Etching Finish
- Operation Panel Stainless Hairline
- Position Indicator 2" Digital Display
- Car Sill Extruded Aluminum
- Handrail Stainless Polishing
- Floor Finish Decotile



디자인 및 재질은 고객의 요청에 따라 변경 가능합니다.  
Design & Material are possible to be changed by customer's requirement.



SONGSAN SPECIAL ELEVATORS CO., LTD.

## SD-511

### DESIGN IMAGE



Front View

### SPECIFICATION & DESIGN

제품사양 및 디자인

- Ceiling Lacquer+Acrylic
- Car Wall, Door Stainless Hairline Etching Finish
- Operation Panel Stainless Hairline
- Position Indicator 2" Digital Display
- Car Sill Extruded Aluminum
- Handrail Stainless Polishing
- Floor Finish Decotile



## SD-512

### DESIGN IMAGE



Front View

### SPECIFICATION & DESIGN

제품사양 및 디자인

- Ceiling Lacquer+Acrylic
- Car Wall, Door Stainless Hairline Etching Finish
- Operation Panel Stainless Hairline
- Position Indicator 2" Digital Display
- Car Sill Extruded Aluminum
- Handrail Stainless Polishing
- Floor Finish Decotile



디자인 및 재질은 고객의 요청에 따라 변경 가능합니다.  
Design & Material are possible to be changed by customer's requirement.

# CEILING COLLECTION

22

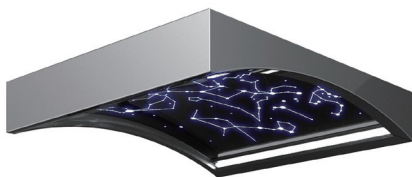
## ORDER MADE SPECIAL LINE

### PANELS

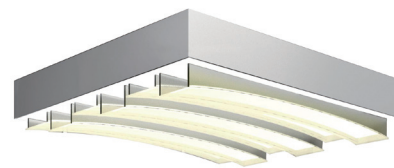
Polygonal Translucent

### LIGHTING

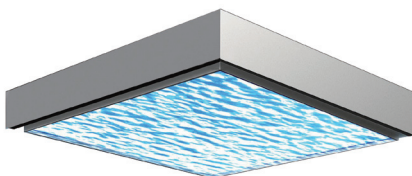
T-5 Fluorescent



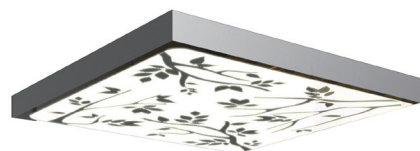
○ **CONSTELLATION**®  
- Round LED



○ **RENAISSANCE**®



○ **AQUAS**®



○ **ECOLE**®



○ **ORGANIC**®



○ **MATRIX I**®



○ **MATRIX II**®



○ **SPERA**®



○ **SD-501**



○ **SD-502**



## DELUXE LINE

### PANELS

Polygonal Translucent

### LIGHTING

T-5 Fluorescent



SD-503



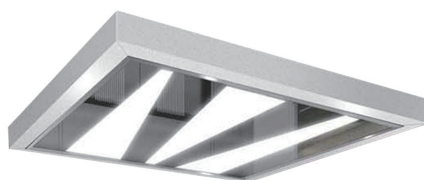
SD-504



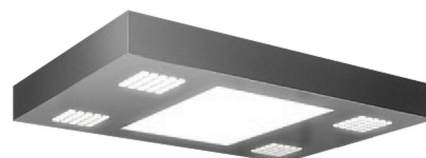
SD-505



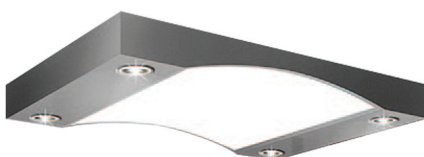
SD-506



SD-507



SD-508



SD-509



SD-510



SD-511

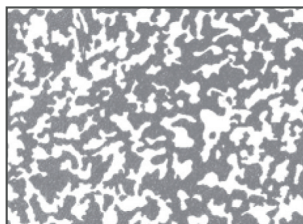


SD-512

# PATTERN & TEXTURES

24

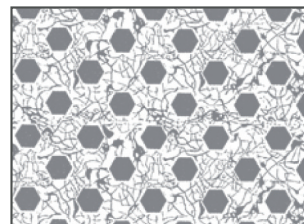
## ETCHING



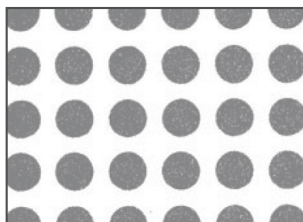
SPP-2007



SPP-2020



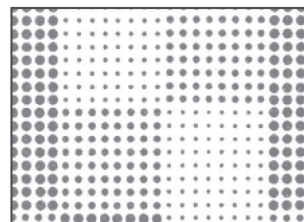
SPP-2022



SPP-2029



SPP-2045

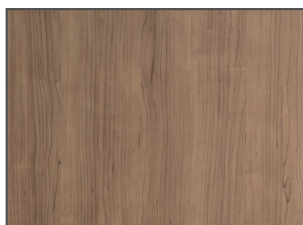


SPP-2053

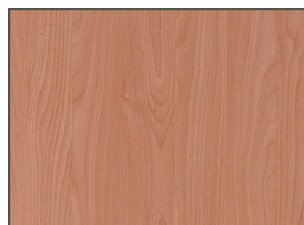
## WOOD PATTERN

- FORMICA (호메이카)

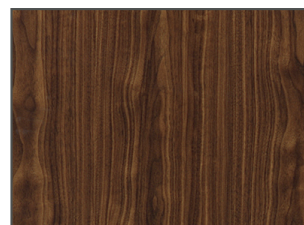
- IMAGE GLASS



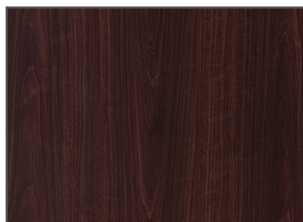
WOOD-01



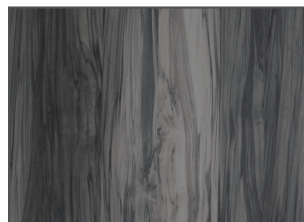
WOOD-02



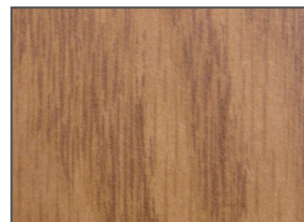
WOOD-03



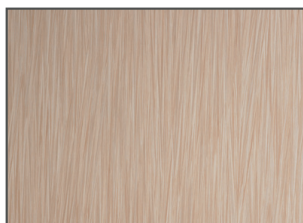
WOOD-04



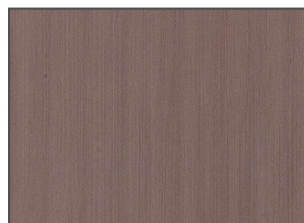
WOOD-05



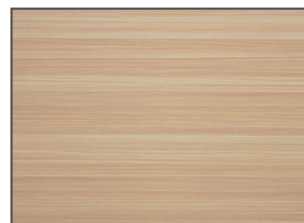
WOOD-06



WOOD-07



WOOD-08



WOOD-09



## INTERIOR/ EXTERIOR FINISH MATERIALS

- Stainless Mirror + Color Etching
- Stainless Etching + Hairline
- Ultra - Lite Stone + Stainless Mirror Combination
- Steel Painting + Stainless Hairline
- Full Nude, Panoramic Glass(Car, Door, Hoistway)  
- Safety Glass, Pair Glass - Poly Carbonate
- Ceiling Material
- Floor Material

## HIGH GLOSSY



HIGHGLOSSY-01



HIGHGLOSSY-02



HIGHGLOSSY-03



HIGHGLOSSY-04

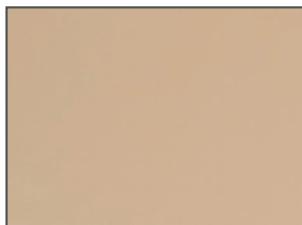


HIGHGLOSSY-05



HIGHGLOSSY-06

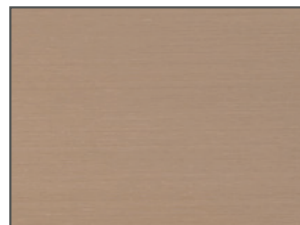
## GOLD & TITANIUM



TG-S1 Mirror Titanium Gold



TG-S2 Mirror 3S Titanium Gold



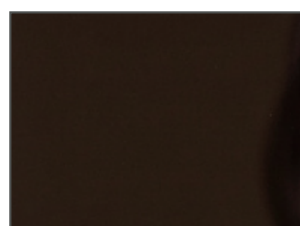
TG-S3 Hairline Titanium Gold



ST-S4 Mirror Art H/L Etching Gold



TB-S5 Mirror 3S Vibrated Ti Bronze

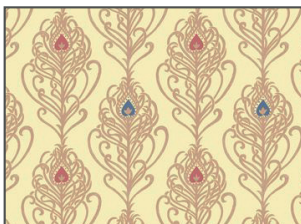


TB-S6 Mirror Ti Bronze

# PATTERN & TEXTURES

26

## IMAGE GLASS - FLOWER PATTERN



FLOWER GLASS-01



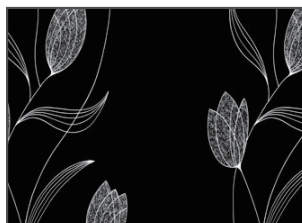
FLOWER GLASS-02



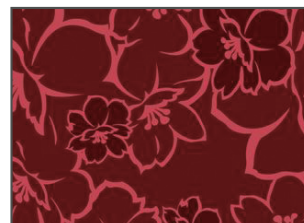
FLOWER GLASS-03



FLOWER GLASS-04

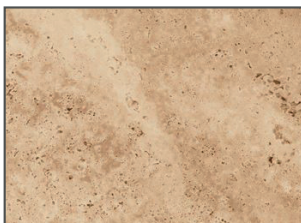


FLOWER GLASS-05



FLOWER GLASS-06

## IMAGE GLASS - MARBLE PATTERN



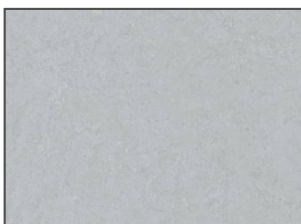
MARBLE GLASS-10



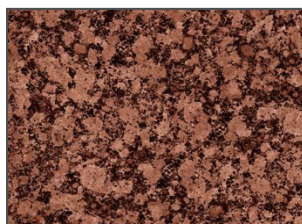
MARBLE GLASS-11



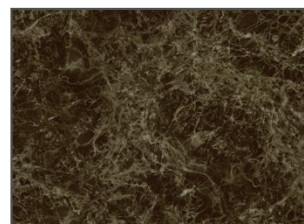
MARBLE GLASS-12



MARBLE GLASS-13

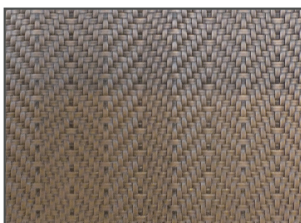


MARBLE GLASS-14

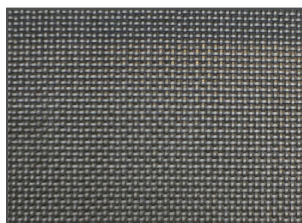


MARBLE GLASS-15

## 3D-EMBOSSING PLATE



EB-01



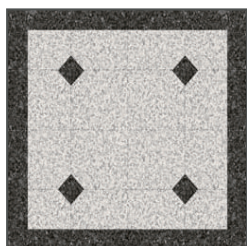
EB-02



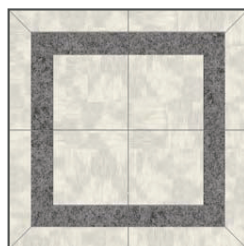
EB-03



**FLOORING  
- DECOTILE**



SD-503



SD-504



SD-507



SD-508



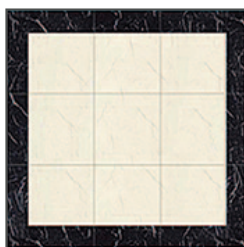
SD-509



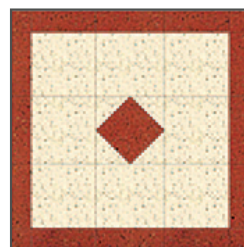
SD-511



SD-512



SD-F5



SD-F6

**FLOORING  
- NATURAL MARBLE  
- ARTIFICIAL MARBLE**



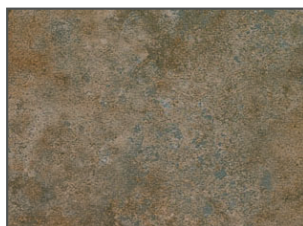
MARBLE-01



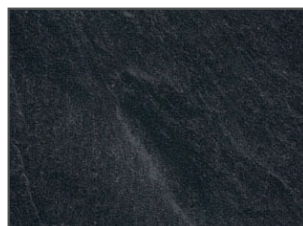
MARBLE-02



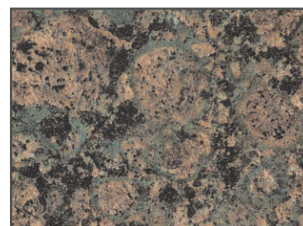
MARBLE-03



MARBLE-04



MARBLE-05

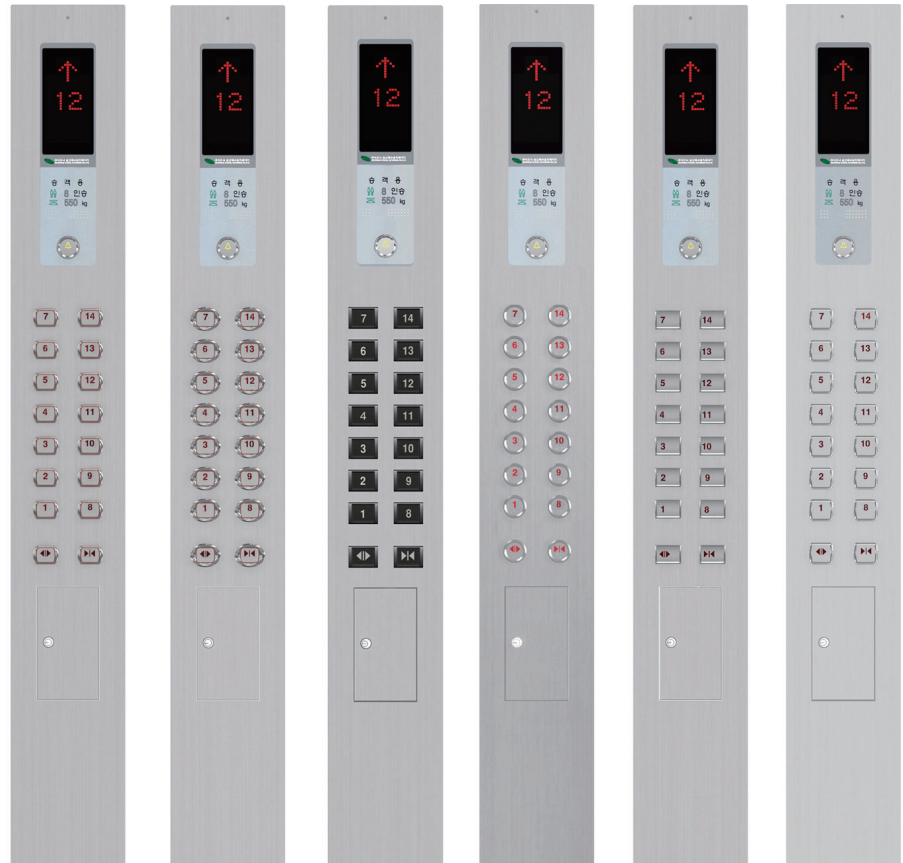


MARBLE-06

# OPERATING PANEL DESIGN

28

## CAR OPERATION PANEL



COP-C01

COP-C02

COP-C03

COP-C04

COP-C05

COP-C06



COP-T100  
for Hall(외부도어용)



COP-T110  
for Car(탑승카용)



COP-P200 Handicapped(장애인용)



COP-P210 Handicapped(장애인용)



## HALL INDICATOR & HALL BUTTON

### ■ INSERTING TYPE (매립형)

### ■ MOUNTING SLIM TYPE (슬림형)



HIB-P01



HIB-P02



HIB-01



HIB-02



HB-01



HB-02



HB-03



HB-04



HIB-C1



HIB-C2



HIB-C3



HIB-C4

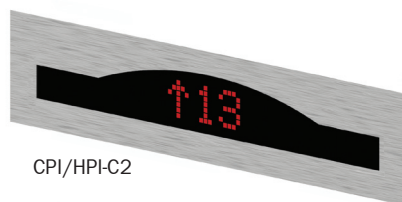
# INDICATOR ACCESSORY DESIGN

30

## CAR POSITION & HALL POSITION INDICATOR



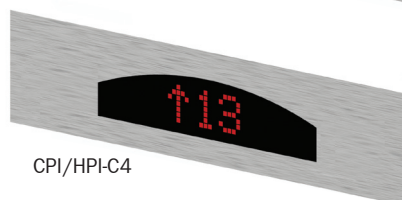
CPI/HPI-C1



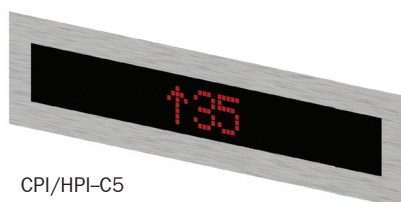
CPI/HPI-C2



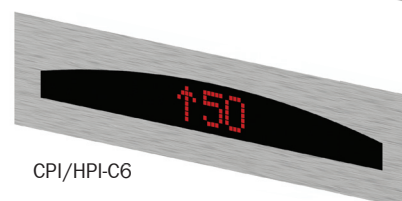
CPI/HPI-C3



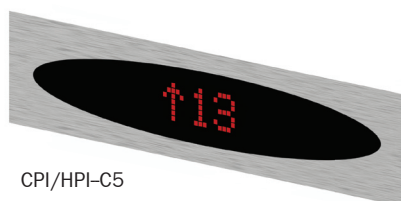
CPI/HPI-C4



CPI/HPI-C5



CPI/HPI-C6



CPI/HPI-C5



CPI/HPI-C6

## BUTTON



SSB-100



BT-C2



BT-C3



BT-C4



BT-C5



BT-C6



BT-C7



BT-C8



BT-C9



BT-C10



BT-C11



BT-C12



BT-C13



SONGSAN SPECIAL ELEVATORS CO., LTD.

## DISPLAY DEVICE

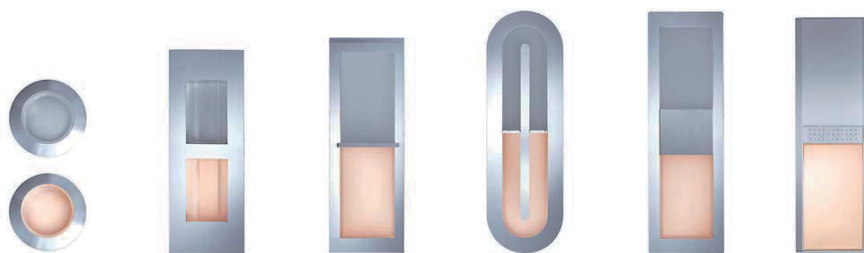


SDM-100  
20~25" Monitor in Car(카 내부용)



SDM-100  
10~15" Monitor in Car(카 내부용)

## HALL LANTERN



HL-H1

HL-H2

HL-H3

HL-H4

HL-H5

HL-H6

## HANDRAIL



HR-C1



HR-C2



HR-C3



HR-C4



HR-C5



HR-C6



**SONGSAN SPECIAL ELEVATORS CO., LTD.**

#### Head Office / Factory

65, Mayu-ro 70beon-gil Siheung City, Gyeonggi-do, 15113, Korea  
Tel: +82 31 433 2255 Fax: +82 31 433 6295  
<http://www.songsan.co.kr>  
e-mail: [songsan@songsan.co.kr](mailto:songsan@songsan.co.kr)

#### Customer service center and local office

Seoul, Busan, Samsung, Daejeon, Daegu, Ulsan, Anyang, Geoje  
Seoul International Airport, Nongshim

#### Overseas marketing dept.

Tel: +82 31 433 9671 Contact: Sophia Kim  
e-mail: [omd@songsan.co.kr](mailto:omd@songsan.co.kr)

#### Overseas Partners

Russia, Kazakhstan, Uzbekistan, Turkmenistan, Myanmar, Mongolia,  
South America, Saudi Arabia, Iran, UAE, Bangladesh, Malaysia,  
China, Taiwan, South Africa, Philippines

**SONGSAN** 의 독자적 기술 및 제품으로 모방할 경우 민·형사상 처벌을 받을 수 있습니다.

It is independent technologies and product of Songsan Special Elevators,  
if you copy it without agreement, receive civil and criminal penalties.